



DNA Pol μ Polyclonal Antibody

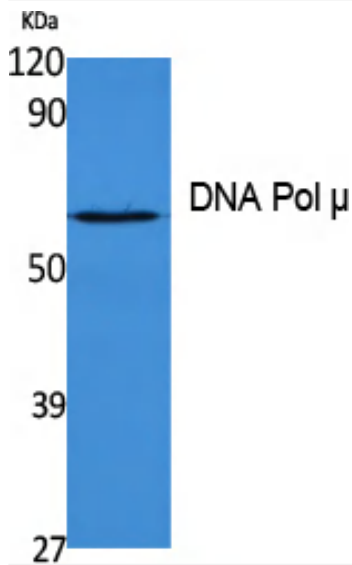
| | |
|----------------------------------|--|
| Catalog No | YP-Ab-02227 |
| Isotype | IgG |
| Reactivity | Human;Rat;Mouse; |
| Applications | WB;ELISA |
| Gene Name | POLM |
| Protein Name | DNA-directed DNA/RNA polymerase mu |
| Immunogen | Synthesized peptide derived from DNA Pol μ . at AA range: 210-290 |
| Specificity | DNA Pol μ Polyclonal Antibody detects endogenous levels of DNA Pol μ protein. |
| Formulation | Liquid in PBS containing 50% glycerol, 0.5% BSA and 0.02% sodium azide. |
| Source | Polyclonal, Rabbit,IgG |
| Purification | The antibody was affinity-purified from rabbit antiserum by affinity-chromatography using epitope-specific immunogen. |
| Dilution | Western Blot: 1/500 - 1/2000. ELISA: 1/40000. Not yet tested in other applications. |
| Concentration | 1 mg/ml |
| Purity | $\geq 90\%$ |
| Storage Stability | -20°C/1 year |
| Synonyms | POLM; polmu; DNA-directed DNA/RNA polymerase mu; Pol Mu; Terminal transferase |
| Observed Band | 54kD |
| Cell Pathway | Nucleus . |
| Tissue Specificity | Expressed in a number of tissues. Abundant in thymus. |
| Function | catalytic activity:Deoxynucleoside triphosphate + DNA(n) = diphosphate + DNA(n+1).,cofactor:Magnesium.,function:Seems to act as an Ig mutase which is responsible for immunoglobulin (Ig) gene hypermutation.,similarity:Belongs to the DNA polymerase type-X family.,similarity:Contains 1 BRCT domain.,tissue specificity:Expressed in a number of tissues. Abundant in thymus., |
| Background | catalytic activity:Deoxynucleoside triphosphate + DNA(n) = diphosphate + DNA(n+1).,cofactor:Magnesium.,function:Seems to act as an Ig mutase which is responsible for immunoglobulin (Ig) gene hypermutation.,similarity:Belongs to the DNA polymerase type-X family.,similarity:Contains 1 BRCT domain.,tissue specificity:Expressed in a number of tissues. Abundant in thymus., |
| matters needing attention | Avoid repeated freezing and thawing! |



Usage suggestions

This product can be used in immunological reaction related experiments. For more information, please consult technical personnel.

Products Images



Western Blot analysis of extracts from K562 cells, using DNA Pol μ Polyclonal Antibody. Secondary antibody(catalog#:RS0002) was diluted at 1:20000 cells nucleus extracted by Minute TM Cytoplasmic and Nuclear Fractionation kit (SC-003,Inventbiotech,MN,USA).